

SUPPLEMENTARY MATERIALS

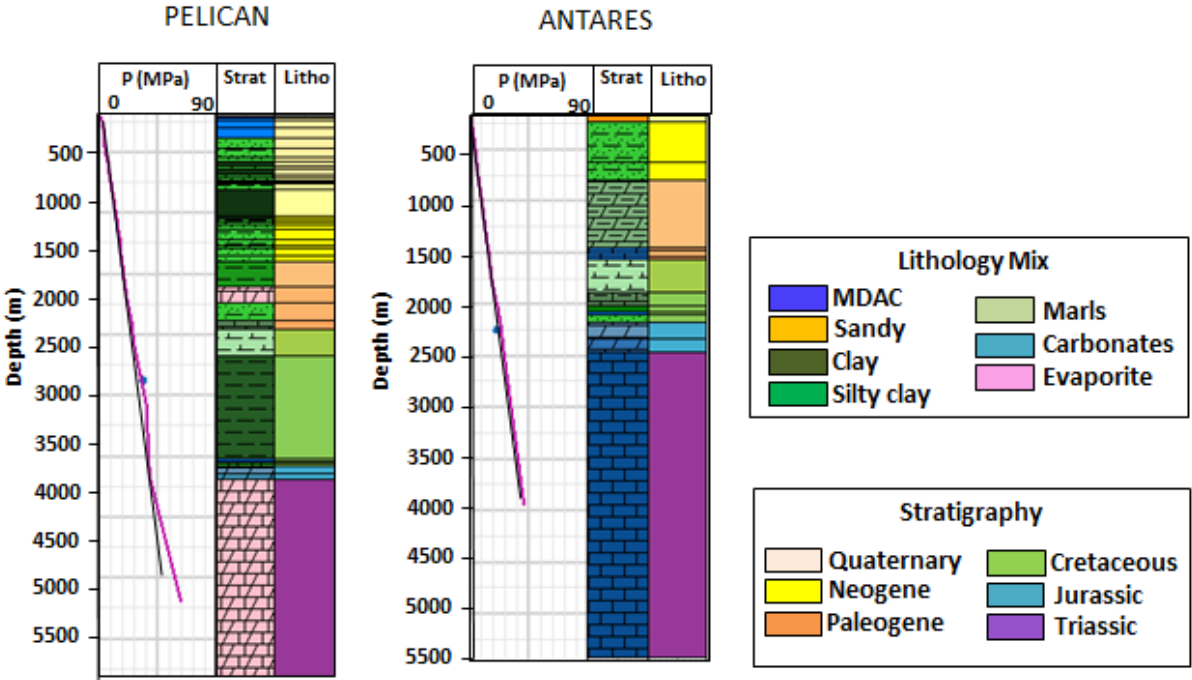


Figure S1. Pressure calibration for two wells. Well location is given in Fig. 3.

Table S1. Rock-Eval results on cuttings collected from two offshore wells (Pingouin-1 and Pelican-1). Well locations are given in Fig. 3.

Sample	Depth (m)	S2 (mgHc/g-rock)	Tmax (°C)	HI (mgHc/g TOC)	OI (mgCO₂/g TOC)	TOC (%)
PINGOUIN-1	595	0.22	424	51	286	0.44
PINGOUIN-2	715	0.12	437	41	427	0.28
PINGOUIN-3	735	0.11	423	41	387	0.26
PINGOUIN-4	875	0.04	422	21	501	0.2
PINGOUIN-5	955	0.09	421	31	343	0.29
PINGOUIN-6	1025	0.11	420	39	334	0.29
PINGOUIN-7	1125	0.05	420	25	430	0.22
PINGOUIN-8	1145	0.14	420	39	292	0.35
PINGOUIN-9	1265	0.14	422	43	307	0.32
PINGOUIN-10	1325	0.15	421	47	279	0.32
PINGOUIN-11	1425	0.1	421	33	305	0.31
PELICAN-1	740	0.14	421	32	328	0.44
PELICAN-2	860	0.15	424	34	306	0.44
PELICAN-3	960	0.19	424	38	290	0.49
PELICAN-4	1050	0.19	422	43	292	0.46
PELICAN-5	1200	0.1	422	27	321	0.36
PELICAN-6	1280	0.15	439	36	387	0.41
PELICAN-7	1493	5.67	432	55	106	10.35
PELICAN-8	1500	0.21	421	38	238	0.53
PELICAN-9	1530	0.2	420	43	284	0.47